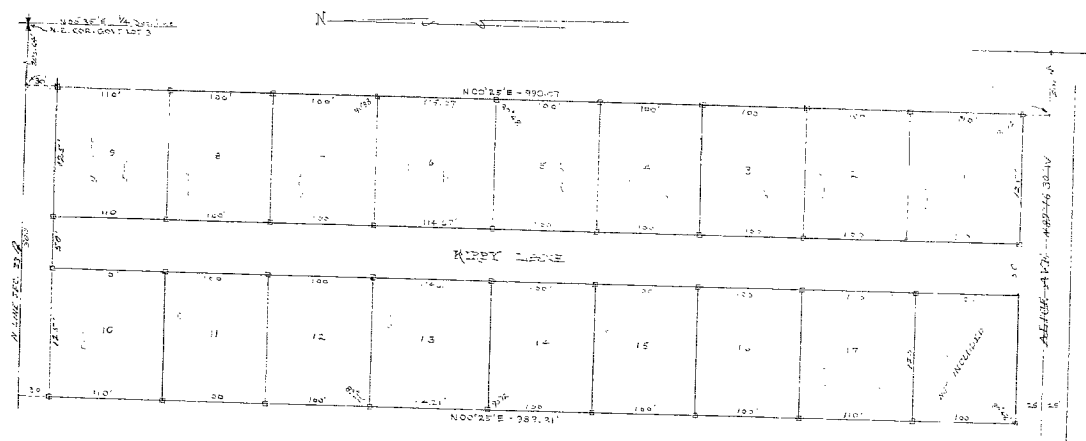


SURVEY MAP
 WITH AN ADJUSTMENT OF THE EAST END OF THE W. 400' OF THE EAST 1/2 OF SECTION 36 (LYING NORTH OF
 AL 16 AVE) SECTION 36, T. 25 N., R. 34 W., N. DAKOTA COUNTY, IOWA.



NOTES TO:
 1. SEE P. 25 OF 258
 2. SEE P. 26 OF 218
 3. SEE P. 27 OF 187
 4. SURVEY BY STANFORD B. SMITH IN 1922.
 5. BY RECORD NUMBER

I HEREBY CERTIFY THAT THE ATTACHED MAP IS A TRUE AND CORRECT REPRESENTATION
 OF A SURVEY MADE BY ME AND THAT SAID SURVEY WAS MADE BY ME.

RANDALL & FISHER
SURVEYORS
IN IOWA
D. E. M. KITBY
THEY HAVE MADE THIS

18.1